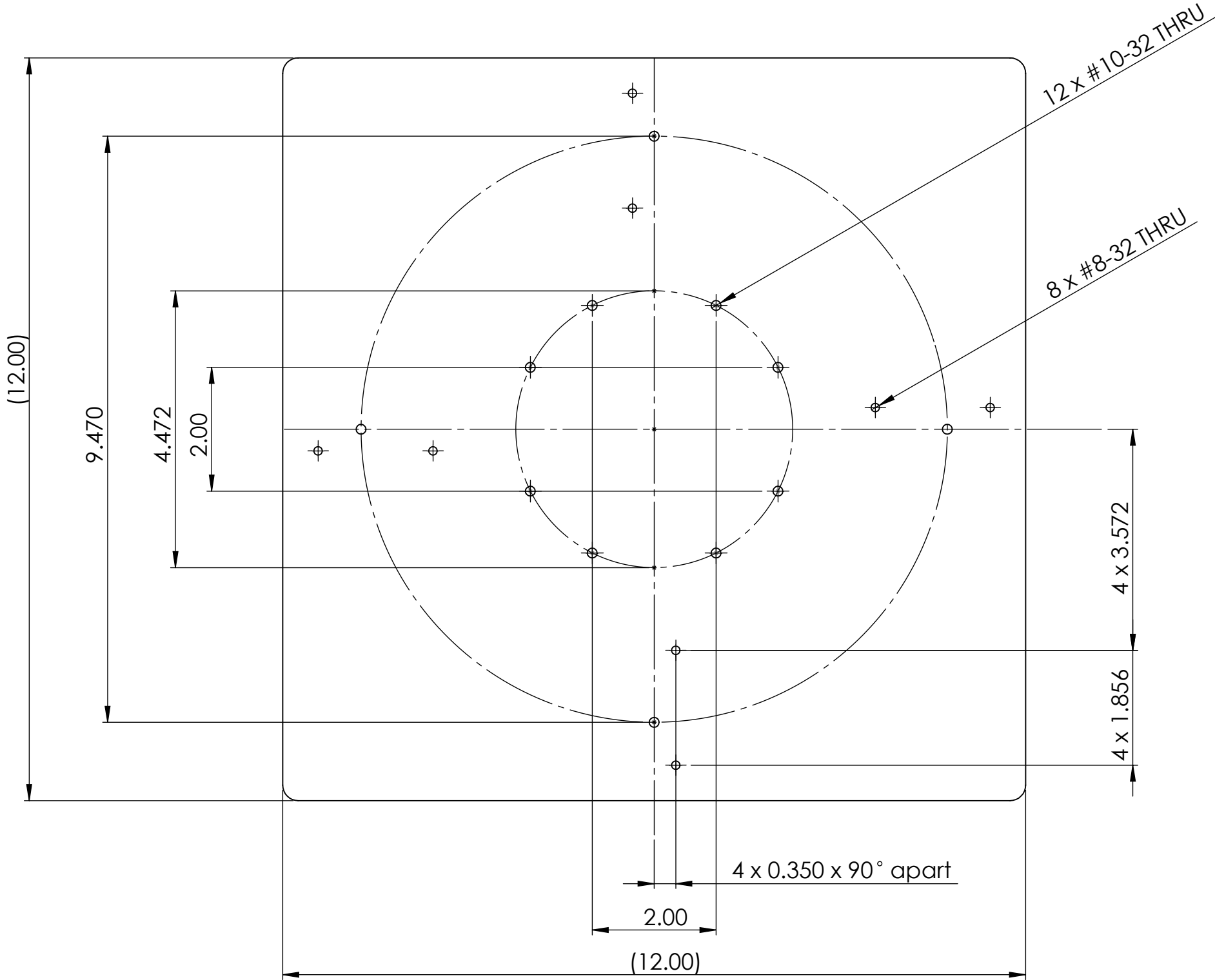


Plate Alum12 x 12 x .50

A

B

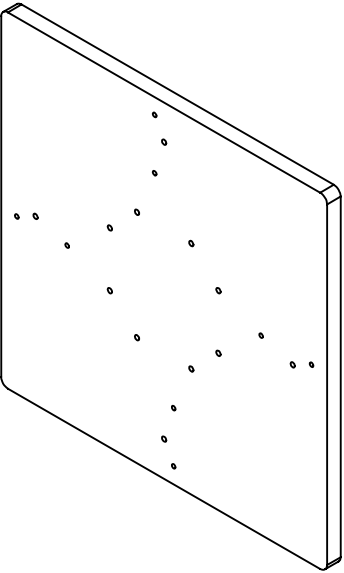


NOTES:

- Material: 6061 Aluminum, 12" x 12" x 1/2" thick
- Finish: No sharp corners

PROPRIETARY AND CONFIDENTIAL
THE INFORMATION CONTAINED IN THIS DRAWING IS THE SOLE PROPERTY OF EDGE SYSTEMS CORPORATION. ANY REPRODUCTION IN PART OR AS A WHOLE WITHOUT THE WRITTEN PERMISSION OF EDGE SYSTEMS CORPORATION IS PROHIBITED.

		UNLESS OTHERWISE SPECIFIED: DIMENSIONS ARE IN INCHES TOLERANCES: FRACTIONAL $\pm 1/16$ ANGULAR: MACH \pm BEND \pm ONE PLACE DECIMAL $\pm .020$ TWO PLACE DECIMAL $\pm .010$ THREE PLACE DECIMAL $\pm .005$ INTERPRET GEOMETRIC TOLERANCING PER: MATERIAL SEE NOTES FINISH SEE NOTES		NAME	DATE	EDGE SYSTEMS, LCC		
			DRAWN			TITLE:		
			CHECKED			ALUMINUM PLATE		
			ENG APPR.					
			MFG APPR.					
			Q.A.					
			COMMENTS:			SIZE B	DWG. NO. ITEM # 2	REV X
NEXT ASSY	USED ON					SCALE: 1:1	WEIGHT:	SHEET 1 OF 1
APPLICATION		DO NOT SCALE DRAWING						



A

B



C

D